

**- NEW NOS COLLECTION -**

Gemelos

**JOCAYMU**



# NOTA

Todos los gemelos con punto en catálogo son color único.

El resto pueden ser en los colores de la carta de metacrilatos.

Los no representados, serán como mínimo 6 por modelo y color.

Los gemelos con dos huecos para piedra de color se pueden combinar, siempre teniendo en cuenta el mínimo de 6 por modelo y colores.

En todo lo anterior no se incluyen los de esmalte.



01.09 P29



01.19 P27



01.20 P28



03.06 P77



03.13 P27



357-3 P021



04.20 P27



04.13 P511



05.14 P27



06.14 P27



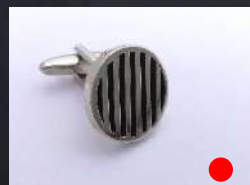
07.03 P77



07.10 P511



07.21 P77



13.10 P38



05.07 P511



22-4 P26



39-4 P29



96-1-4 P89



14.06 P631



14.15 P89



14.17 P59



257 P28



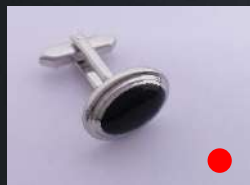
371-5 P511



16.21 P29

BATEA\_1

● Color único



16.22 P29



17.07 P29



18.03 P521



18.07 P191



260-33 P021



279-4 P521



19.02 P59



16.19-5 P511



343-5 P521



25.06 P631



298-1 P29



902 P57



903 P57



904 P57



905 P57



906 P57



907 P09



908 P57



909 P38



225 P78



224 P06



94-3 P19



217-3 P57

BATEA\_2

● Color único



94 P19



217 P57



38 P29



28 P06



71 P501



21 P06



72-3 P521



215 P521



72 P511



82 P38



219 P06



1315 P501



216 P84



STRAK P93



271 272 P85



258-3 P76



96-1-3 P89



22 P26



224-3 P06



39-3 P29



258-2 P76



39-2 P29



1409C P28



1409 P38

BATEA\_3

● Color único



74 P09



256 P57



252 P501



97-1 P89



39-1 P29



224-1 P06



92 P89



1101-1 P501



41322N P521



22-2 P26



96-1 P89



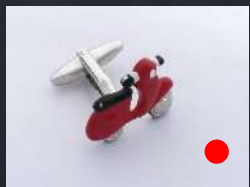
63 P501



117 P57



103-8 P57



103-1 P57



36957 P28



BICI P28



63-3 P011



268 P89



256P P57



270 P89



273 P201



274 P511



293 P29

BATEA\_4

● Color único



262-2 P521



262-3 P521



262-4 P521



262-33 P521



259-3 P011



291 P501



263-2 P521



263-3 P521



263-4 P521



263-5 P521



263 P021



286 P021



264-2 P021



264-3 P021



264-4 P021



266-2 P521



266-33 P521



266-4 P521



265-2 P521



265-3 P521



265-4 P521



260-3 P021



287 P521



261-3 P521

BATEA\_5

● Color único



267-2 P521



267-3 P521



267-4 P521



267-33 P521



44-3 P011



92-3 P011



275-3 P021



275-33 P021



276-3 P021



277-5 P521



277-33 P521



1101-33 P501



278-3 P521



278-33 P521



279-10 P521



279-33 P521



382 P78



282-1 P021



283 P521



284 P521



288 P521



289 P021



290 P511



294 P511

BATEA\_6

● Color único





96-1-2 P89



224-2 P06



22-3 P26



356-33 P511



357-33 P021



331 P58



292-1 P521



358-33 P511



295 P501



296 P051



309 P27



310 P26



297 P28



298 P29



299 P29



300 P77



301-3 P28



302 P29



303 P28



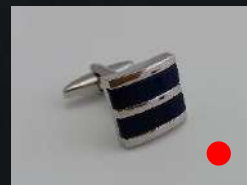
304 P29



305 P29



306 P521



307 P521



308 P521

BATEA\_7

● Color único



311 P631



312 P28



313 P78



314 P051



315 P28



316 P28



317 P77



318 P28



319 P77



320 P28



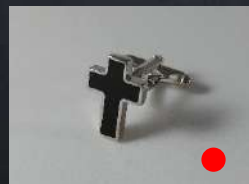
321 P77



322 P77



323 P77



324 P28



325 P28



326 P28



327 P77



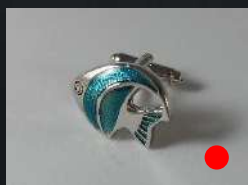
328 P77



329 P28



330 P631



332 P78



333 P28



334 P78



301-1 P28

BATEA\_8

● Color único



335-E P021



335-F P021



336-1 P501



337-1 P501



338-33 P521



339 P501



340 P511



341-3 P29



342-33 P021



342-NC P021



343 P021



343-33 P021



344 P29



345-3 P201



346-33 P511



347-33 P501



348-33 P201



349-33 P501



350 P501



351-33 P511



352 P201



353-3 P521



354-33 P021



355-33 P201

BATEA\_9

● Color único



359 P511



360-33 P501



361-3 P201



362 P28



363 P19



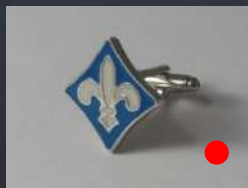
364 P19



365 P28



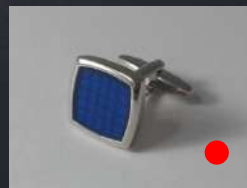
366 P501



367 P77



368 P021



369 P28



351-14 P511



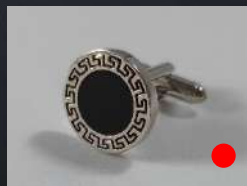
336-33 P501



337-33 P511



352-PA P201



370-1 P521



371-33 P511



351-4 P511



B-CV P25



B-CAT P25



B-EXTR P25



B-MERID P25



B-MAD1 P25



B-MAD2 P25

BATEA\_10

● Color único



372 P77



373 P77



374 P77



279 P201



357-4 P021



343-3 P521



375 P021



06.24 P511



16.19 P511



17.15 P021



18.05 P021



18.10 P511



18.14 P511



19.10 P021



19.13 P021



19.19 P021



376 P78



267-14 P521



366-3 P501



377-3 P501



378-3 P501



379-3 P501



380 P78



381 P78

BATEA\_11

● Color único



383 P29



384 P77



385 P76



386 P051



387 P26



388 P201



19.13-2 P021



390 P38



391 P38



392 P38



393 P021



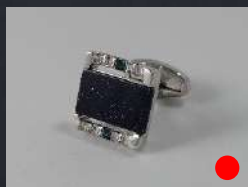
394 P38



395 P29



396 P201



397 P201



398 P521



399 P651



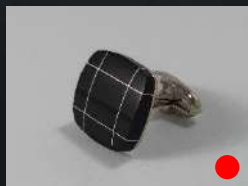
400 P631



401 P631



402 P521



403 P861



404 P651



263-44 P521



267-44 P521

BATEA\_12

● Color único

## METACRILATOS



01 - NEGRO



02 - BURDEOS



03 - MARINO



04 - VERDE



05 - AZUL NCH.



06 - BEIG



07 - MALVA



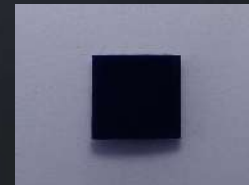
08 - NACAR



09 - ROJO



10 - AZUL



11 (33)- MNO. NVO



12 - AMRILLO



13 - CENIZA



14 - GRIS



15 - ROSA



16 - PISTACHO



17 - NARANJA